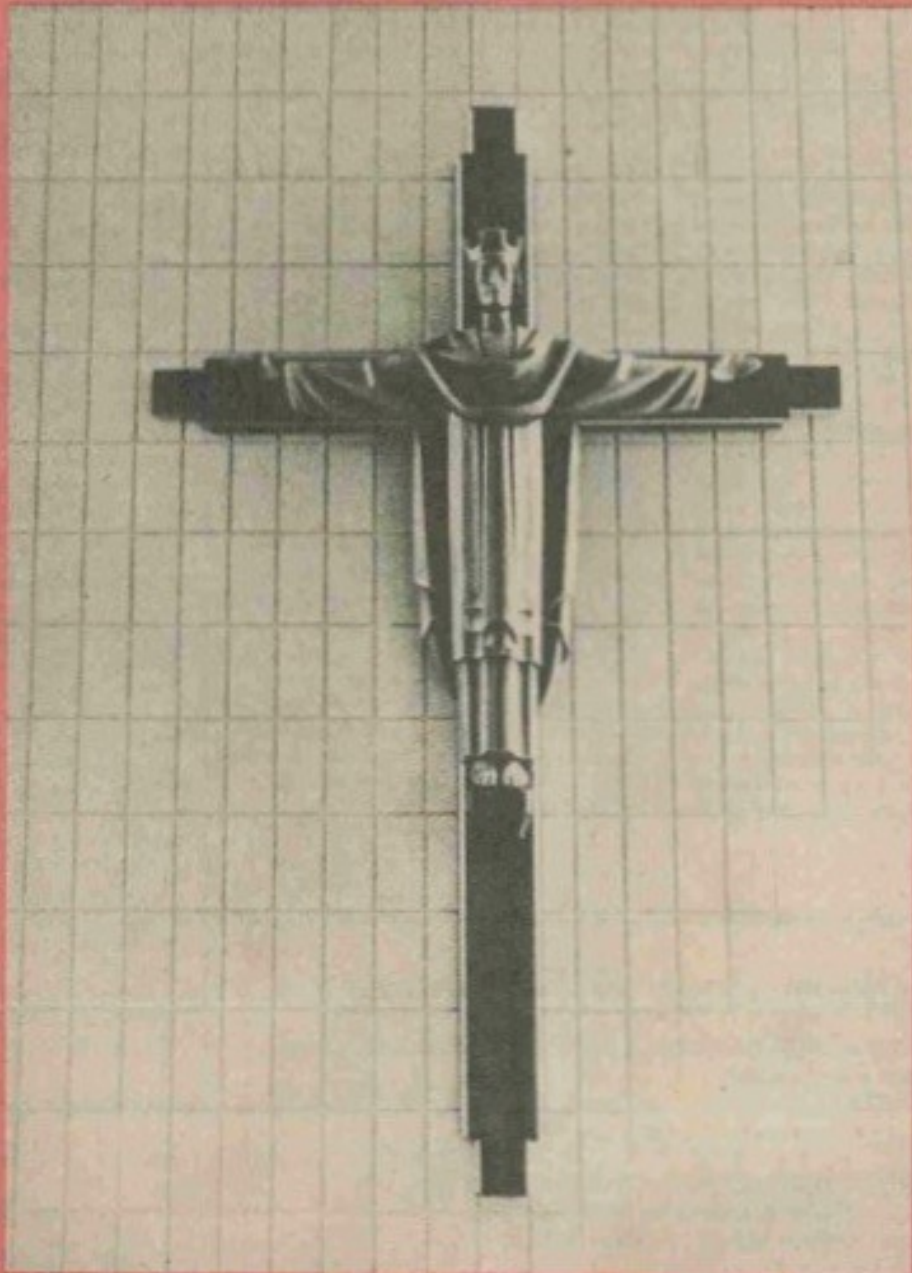




THE SHEPHERD

Official Periodical of The Evangelical
Lutheran Church of Canada

JUNE, 1977
Vol. 53, No. 6



Christus Rex at Gloria Dei

Gloria Dei dedicated in Winnipeg

OUR CHURCH IS HERE TO STAY

"This church looks like it were built to stay providing an island of faith in a world of gloom and despair" said Rev. Oscar Sommerfeld, preacher and official representative of The ELCC at the Sunday morning Service of Dedication, Gloria Dei Lutheran Church, Winnipeg, on May 8. This morning worship service was indeed a highlight of all the dedication events with two of the three former Pastors and Building Committee Chairman, Edgar Lach, taking part. Festival music was provided on the 14 rank antique pipe organ by Rev. Ronald Brugger, ALC pastor from Huron, South Dakota, and the choirs of Gloria Dei. Dedicating the many appointments was present Pastor, James Buenting, while the actual dedication of the building was also performed by The Rev. Oscar Sommerfeld, Director of Communication of The ELCC.

Following the Festival Service, a sit-down dinner was held in the parish hall served by the members of the ELCW. The head table was flanked



The Chancel of Gloria Dei Church, Winnipeg.

with a bouquet of white mums and red carnations plus a cake in the form of a Bible. The other tables had cakes decorated with different Christian symbols. After a delicious meal and good fellowship, tours of the new building took place until the late afternoon. In the evening the two former ministers attending, Rev. R. Lemke, Edmonton, and Rev. W.

Lexvold, Medicine Hat, delivered two short sermons at a Service of Vespers. This was again followed by a reception.

Also included in the festivities were special services the next Sunday. These were a special Children's Worship Service, the first Holy Eucharist in the new sanctuary and in the evening Choral Vespers with the choirs of Zion Lutheran, Winnipeg, combining with the host choir. The dedication recital of the 1850 Stevens Pipe Organ took place in June.

Gloria Dei was founded in 1961 as one of the last ALC missions. Since then it has been served by four faithful pastors: Rev. R. Lemke, 1961-1965; Rev. R. Gilmore, 1965-1967; Rev. W. Lexvold, 1968-1973; and Rev. J. Buenting, 1973. The church has been independent of The ELCC mission board since April 1976 when the debt on the first building (used for worship facilities but intended as an education unit or parish hall) was paid. The original congregation numbered 66 confirmed charter members which has now grown to 438 confirmed members. Excavation for the present church was begun last September.

The new building together with the parish hall is located in Charleswood in the southwest corner of the city. Standing on an acre of ground, this present sanctuary was designed by



The 1850 vintage Stevens tracker-action pipe organ at Gloria Dei.

Hans Peter Langes and constructed by Gateway Construction Ltd. It is a masonry building of modified Romanesque design with a native Tyndall stone exterior and scored concrete brick interior.

Although the building is constructed on simple lines, the furnishings are large and massive echoing the theme that Gloria Dei is here to stay. The pulpit is European in character being elevated several feet off the floor. Matching the pulpit is the huge concrete stucco font on the opposite side in the baptistery. This corner is complete with niche and large brass-plated ewer. The 10 foot long Altar carries the noble inscription, "Holy, Holy, Holy," which is the song of the angels in Isaiah, as well as the Sanctus of the Communion liturgy. The Altar together with all the other chancel furnishings is correctly placed in the "resurrection East" of the church, facing as it were, the heavenly Jerusalem. Most predominantly flanking the east wall is the Christus Rex which is a combination symbol of both

the crucifixion and the resurrection as historical facts. The cross with the crowned figure is 8 feet tall and was hand carved and hand painted in Italy. The Christ in Glory radiates the triumphant King who has conquered all forces, past, present and future which enslave his people. His heavenward face and priestly vestments also assert the intermediary role Our Blessed Lord fulfilled between God and man. A Rood Beam suspended from wall to wall at the entrance to the Chancel serves to contain the spot-lights in the Chancel. This rood beam recalls Genesis 28 where we read, "This is none other than the House of God and this is the Gate of Heaven." Predominant colours used in the interior are brown, red, golds and contrasting whites. The seating capacity is 325.

Gloria Dei's Pipe Organ is located in the balcony on the west wall of the church. It is encased in a gleaming white antique case complete with cornices at the top and gold display pipes. This tracker action instrument with some-

what over 620 pipes, was located through the auspices of the Organ Clearing House. The congregational singing in the new building is enhanced because of the excellent acoustics which also require no microphones in the chancel.

The basement of the church contains ten well finished classrooms for Sunday School and meeting purposes, a multi-purpose area in the centre, as well as a working room for the Altar Guild. Additional Sunday School space is found in the flexible areas of the former building. Previous to this, most Sunday School classes had to meet in a nearby public school.

May the same zeal and enthusiasm which has characterized this young mission congregation in its first 16 years of existence, continue to be its hallmark as it ventures forth in a new building with an old and timeless message for all mankind!

Soli Deo Gloria

Ruth Bunting

New Gestetner Faxil is probably the world's fastest and most economical plain paper copier. But you'll have to see it to get the picture.

No, we didn't forget the picture. Even though it's worth a thousand words, no picture can convey all the features and benefits of Gestetner Faxil. You simply have to see it in action to fully appreciate it.

But what we can tell you here is that Gestetner Faxil does almost anything that those units costing tens of thousands of dollars can do, at a fraction of the price.

With Gestetner Faxil, you can run up to 8,400 top-quality, plain paper copies an hour, and the cost-per-copy is less than $\frac{1}{4}$ of a cent.

Unlike those very expensive units, ours runs on a regular power source, needs no special temperature or humidity conditions, no specially-trained operator, and requires just a minimum of maintenance.

To see Gestetner Faxil plain paper copying for yourself, look us up in the phone book and call us for a demonstration. Or mail in the coupon, if it's more convenient.

Once you see Gestetner Faxil, you'll get the picture.

To: Gestetner (Canada) Ltd., 849 Don Mills Rd., Don Mills, Ont. M3C 1W1
 I want to see Faxil in action. Call me to arrange a time.
 I want more information about this plain paper copier.

Name/Company _____

Address/City/Province _____

Postal Code/Phone Number _____

Gestetner ^{SHP-3}
WHATEVER YOUR COPYING NEEDS